

WELCOME TO THE FUTURE OF CYBER SECURITY

# SMART-1

## SECURITY MANAGEMENT PLATFORM



ALL-IN-ONE SECURITY MANAGEMENT SOLUTION, WITH POLICY MANAGEMENT, INTEGRATED THREAT VISIBILITY, WORKFLOW AND ORCHESTRATION, EMPOWERING CHECK POINT INFINITY ARCHITECTURE ACROSS ANY IT ENVIRONMENT. FLEXIBLE AND SCALABLE FIVE ENTERPRISE-GRADE SMART-1 DEDICATED MANAGEMENT APPLIANCES.



### All-in-one Security Management

Industry leading Gold Standard platform for consolidated security management



### Full Threat Visibility

Single visual dashboard fully integrated with logging, monitoring and event analysis



### Enterprise-Ready Scalability

Centrally Manage 1 to 5000 High-Performance Gateways

# Smart-1

405 | 410 | 525 | 5050 | 5150



WELCOME TO THE FUTURE OF CYBER SECURITY

# Smart-1

405 | 410 | 525 | 5050 | 5150

R80.x | SmartEvent | Compliance | Workflow | Multi-domain Management | Automation

Growing networks, disruptive technologies, and the proliferation of interconnected devices demand a new approach to managing security. Check Point Infinity architecture consolidates management of multiple security layers, providing superior policy efficiency and enabling you to manage security through a single pane of glass. The single management centrally correlates all types of events across all network environments, cloud services and mobile infrastructures.

The Smart-1 405 | 410 | 525 | 5050 | 5150 dedicated appliances are optimized for performance and scalability with both HW and OS hardened from the core.

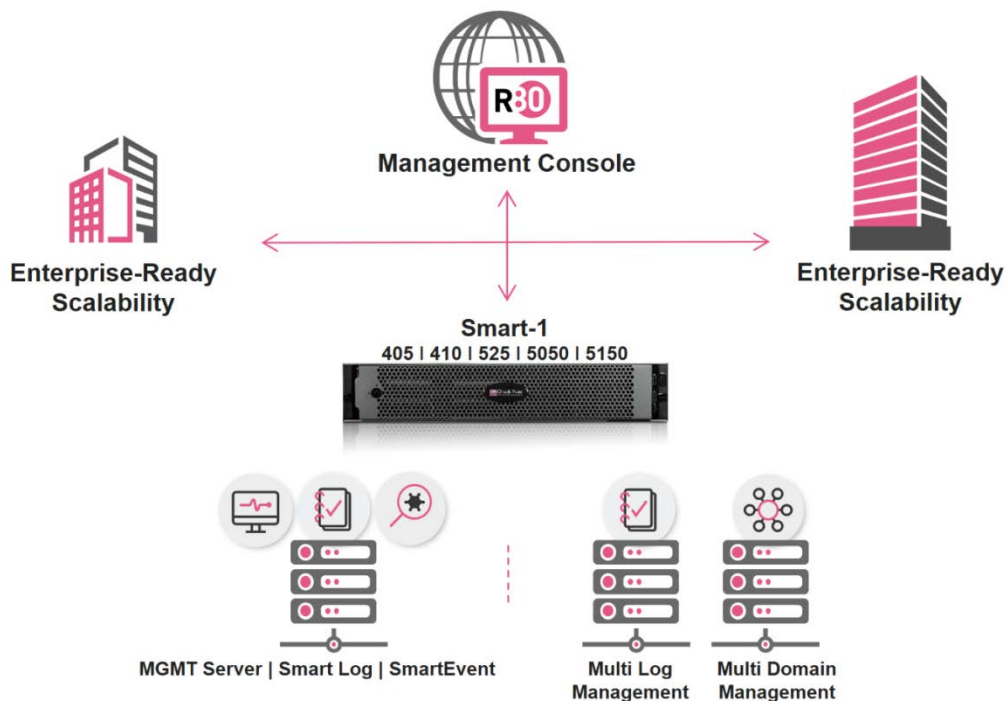
Smart-1 security management platforms double management capacity and boost performance, increasing security efficiency.

## Key Features & Benefits

Policy Management..... Unify network, cloud and mobile policy in a single pane of glass

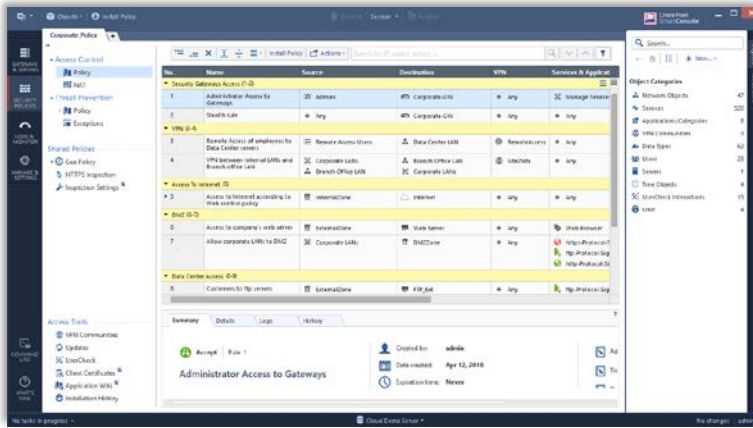
Integrated Threat Management..... Real-time forensic and event investigation, compliance, and reporting

Data Storage and Performance..... Manage thousands of objects and rules and millions of events



WELCOME TO THE FUTURE OF CYBER SECURITY

**SPOTLIGHT**



**Unified Console to Manage Everything**  
With one console, security teams can manage all aspects of security from policy to threat prevention – across the entire organization – on both physical and virtual environments. Consolidated management means increased operational efficiency.

In addition to a unified console, you also now have a unified policy to manage everything from users to data to gateways. All access points are now controlled in one place.

**Reports & Compliance**

Take control and monitor all your gateways in real time. Easily generate and schedule reports. Over 300 Security Best Practices, regulatory compliance checks

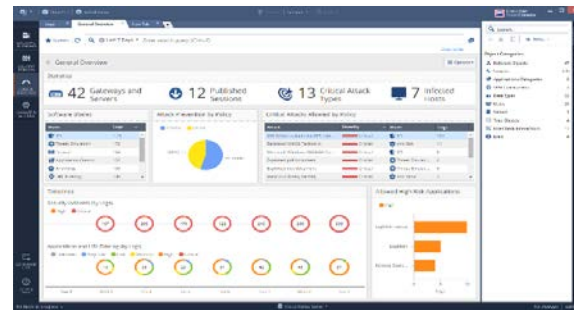


**Real Time Integrated Threat Management**

For deep forensic analysis, we've integrated logging, monitoring, events, governance and compliance. R80.x SmartConsole gives you full visibility and control across your network.

**Security Efficient Operations & APIs**

Improve productivity with automation API that orchestrates workflows and aligns security with IT processes and systems.



**Multi-domain Management**

Easily manage hundreds of private networks within the same infrastructure and create up to 200 domains based on geography, business unit or security function.

**Modular & Scalable**






Manage thousands of simultaneous sources, thousands of rules and millions of transactions with up to 8x the data storage and performance on a single machine.

Modular platform supporting up to 24 cores, 256GB RAM and 48TB of storage for any deployment environment.



WELCOME TO THE FUTURE OF CYBER SECURITY

## SPECIFICATIONS

	Enterprise Grade			Ultra High End	
Appliances	405	410	525	5050	5150
					
<b>Capacity &amp; Performance</b>					
Managed Gateways	5	10	25	50	150+ <sup>1</sup>
Maximum Domains (Multi-Domain Management)	-	-	-	50	200
Peak Logs per Sec	40,000	45,000	60,000	80,000 <sup>3</sup>	100,000 <sup>3</sup>
Peak Indexed Logs per Sec	6,000/400 <sup>2</sup>	10,000/600 <sup>2</sup>	14,000/1600 <sup>2</sup>	27,000 <sup>3</sup> /7,500 <sup>2</sup>	40,000 <sup>3</sup> /12,000 <sup>2</sup>
Sustained Indexed Logs per Sec	3,000/200 <sup>2</sup>	5,000/300 <sup>2</sup>	7,000/800 <sup>2</sup>	15,000 <sup>3</sup> /3,750 <sup>2</sup>	22,000 <sup>3</sup> /6,000 <sup>2</sup>
GB per Day of Logs	53/1.7 <sup>2</sup>	88/5.2 <sup>2</sup>	150/17.1 <sup>2</sup>	320/80 <sup>2</sup>	470/128 <sup>2</sup>
<b>Hardware Specifications</b>					
Cores	2	2	4	16	24
Storage (HDD) Hot-Swappable	1x 1 TB	1x 2 TB	2x 4 TB	4x 4 TB	up to 12x 4TB (default 6x 4TB)
RAID Type	-	-	1	5, 10	5, 6, 10, 50, 60
Memory (RAM) Default/Max	16 GB	32 GB	32/64 GB	64/128 GB	128/256 GB
<b>Interfaces</b>					
Default Network Interfaces	5x Copper GbE	5x Copper GbE	4x Copper GbE	4x Copper GbE	4x Copper GbE
Extended Network Interfaces	-	-	Optional	Optional	Optional
Console Port	1x RJ45	1x RJ45	1x DB9 <sup>4</sup>	1x DB9 <sup>4</sup>	1x DB9 <sup>4</sup>
USB Ports	2	2	4	4	4
<b>Physical</b>					
Enclosure	1U	1U	1U	1U	2U
Standard (W x D x H)	17.13 x 17.64 x 1.63 in.		17.08 x 26.66 x 1.68 in.	17.08 x 27.74 x 1.68 in.	17.08 x 28.17 x 3.42 in.
Metric (W x D x H)	435 x 448 x 44 mm		434 x 677.3 x 42.8 mm	434 x 704.7 x 42.8 mm	434 x 715.5 x 86.8 mm
Weight	7.7kg (16.9 lbs.)		13.8kg (30.42lbs.)	21.1kg (46.5lbs.)	28.6kg (63.1lbs.)
<b>Power</b>					
Dual, Hot-Swappable PSU	No	No	Yes	Yes	Yes
Dual, Hot-Swappable DC PSU	No	No	No	Optional	Optional
Power Input	AC 100 ~ 240V @ 50 ~ 60Hz				
Power Supply Spec (max)	250W	250W	350W	495W	750W
<b>Environment Conditions</b>					
Operating Environment	32° to 104° F / 0° to 40° C, 5~90% Humidity (non-condensing)		50° to 95° F / 10° to 35° C, 10~80% Humidity		
Storage Environment	-40° to 158° F / -40° to 70° C, 5~95% Humidity (non-condensing)		-40° to 149° F / -40° to 65° C, 5~95% Humidity		
<b>Certifications</b>					
Safety/Emissions/Environment	UL / CE, FCC Class A / RoHS				

<sup>1</sup> Manages up to 5000 Check Point 1400 Appliances

<sup>2</sup> SmartEvent configuration

<sup>3</sup> In Multi-Domain configuration

<sup>4</sup> DB9 to RJ-45 adapter included

### CONTACT US

**Worldwide Headquarters** | 5 Ha'Solelim Street, Tel Aviv 67897, Israel | Tel: 972-3-753-4555 | Fax: 972-3-624-1100 | Email: info@checkpoint.com

**U.S. Headquarters** | 959 Skyway Road, Suite 300, San Carlos, CA 94070 | Tel: 800-429-4391; 650-628-2000 | Fax: 650-654-4233 | www.checkpoint.com

## ORDERING SMART-1 APPLIANCES

Smart-1 Appliances <sup>1</sup>	SKU
<b>Smart-1 405</b>	
Smart -1 405 Appliance NG Security Management for 5 gateways (SmartEvent & Compliance 1 year)	CPAP-NGSM405
Smart -1 405 Appliance, dedicated SmartEvent for 5 gateways (perpetual)	CPAP-NGSM405-EVNT
<b>Smart-1 410</b>	
Smart -1 410 Appliance NG Security Management for 10 gateways (SmartEvent & Compliance 1 year)	CPAP-NGSM410
Smart -1 410 Appliance, dedicated SmartEvent for 10 gateways (perpetual)	CPAP-NGSM410-EVNT
<b>Smart-1 525</b>	
Smart-1 525 Appliance NG Security Management for 25 gateways (SmartEvent & Compliance 1 year)	CPAP-NGSM525
Smart-1 525 Appliance, dedicated SmartEvent for 25 gateways (perpetual)	CPAP-NGSM525-EVNT
<b>Smart-1 5050</b>	
Smart-1 5050 Appliance NG Security Management for 50 gateways (SmartEvent & Compliance 1 year)	CPAP-NGSM5050
Smart-1 5050 Appliance NG MDM for 50 gateways, 5 domains (SmartEvent & Compliance 1 year)	CPAP-NGSM5050-MD5
Smart-1 5050 Appliance, dedicated SmartEvent for 50 gateways (perpetual)	CPAP-NGSM5050-EVNT
Smart-1 5050 Appliance, dedicated Multi-Log Manager for 50 gateways and 10 domains	CPAP-NGSM5050-MLOG10
<b>Smart-1 5150</b>	
Smart-1 5150 Appliance NG Security Management for 150 gateways (SmartEvent & Compliance 1 year)	CPAP-NGSM5150
Smart-1 5150 Appliance NG MDM for 150 gateways and 5 domains (SmartEvent & Compliance 1 year)	CPAP-NGSM5150-MD5
Smart-1 5150 Appliance, dedicated SmartEvent for 150 gateways (perpetual)	CPAP-NGSM5150-EVNT
Smart-1 5150 Appliance, dedicated Multi-Log Manager for 150 gateways and 10 domains	CPAP-NGSM5150-MLOG10

<sup>1</sup> SmartEvent and Compliance for one year, extension SKUs are available

## ACCESSORIES

Interface Cards and Transceivers	SKU
2 Port 1GBase-F SFP+ interface card. Requires an additional 1GBase SFP+ transceiver per port.	CPAC-2-1F-SM
SFP transceiver for 1000 Base-T RJ45 (Copper)	CPAC-TR-1T-B
SFP transceiver for 1G fiber ports - short range (1000Base-SX)	CPAC-TR-1SX-B
SFP transceiver for 1G fiber ports - long range (1000Base-LX)	CPAC-TR-1LX-B
<b>Hardware Expansion</b>	
64GB RAM (replace) for Smart-1 525 management appliance	CPAC-RAM64GB-SM525
Memory upgrade kit from 64GB to 128GB for Smart-1 5050 management appliance	CPAC-RAM64GB-SM5050
Memory upgrade kit from 128GB to 256GB for Smart-1 5150 management appliance	CPAC-RAM128GB-SM5150
<b>Spares and Replacements</b>	
Replacement AC Power Supply for Smart-1 525 management appliance	CPAC-PSU-AC-SM525
Replacement AC Power Supply for Smart-1 5050 management appliance	CPAC-PSU-AC-SM5050
Replacement AC Power Supply for Smart-1 5150 management appliance	CPAC-PSU-AC-SM5150
Dual DC power supplies for Smart -1 5050/5150 management appliances	CPAC-PSU-DC-Dual-SM5050/5150
Additional/Replacement 4TB Hard Drive for Smart-1 525 appliance	CPAC-HDD-4TB-SM525
Additional/Replacement 4TB Hard Drive for Smart-1 5050 and Smart-1 5150 appliances	CPAC-HDD-4TB-SM5050/5150
<b>Slide Rails</b>	
Slide RAILS for Smart-1 525/5050 management appliances (24 inch-36 inch)	CPAC-RAILS-SM525/5050
Slide RAILS for Smart-1 5150 management appliance (24 inch-36 inch)	CPAC-RAILS-SM5150